



NEW 10 pole cable connector



Ergonomic latch design



New 10 pole D size receptacle



Solder termination

XLR Type Data Power Connectors – 8 + 2 pole

NEW



NC10FXX-14-B



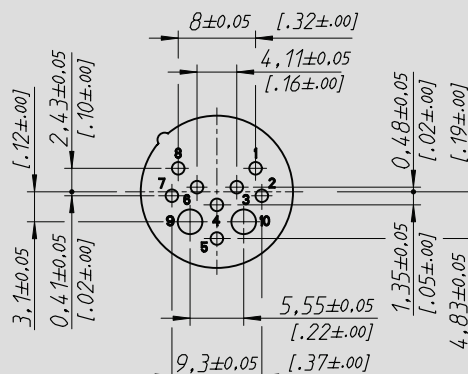
NC10FRX-14-B



NC10MD-LX-B

- Suitable for data offering CAT 5e performance and power up to 16 A and 50 V - exceeds PoE+ capabilities
- Superior ruggedness compared to RJ45 type connectors
- All metal housing offers best overall RF protection and electromagnetic shielding
- D-size housing provides installation compatibility with industry standard D mounting dimensions
- Receptacle with duplex ground contact for excellent signal integrity

10 pole Contact Arrangements:



Ordering Information 10 pole XLR

NC10FXX-14-B	10 pole female cable connector, chuck type strain relief, black chrome, metal housing
NC10MXX-14-B	10 pole male cable connector, chuck type strain relief, black chrome, metal housing
NC10FRX-14-B	10 pole female right-angle cable connector, chuck type strain relief, black chrome, metal housing
NC10MRX-14-B	10 pole male right-angle cable connector, chuck type strain relief, black chrome, metal housing
NC10FD-LX-B	10 pole female D-size receptacle, black chrome metal housing, duplex ground contact
NC10MD-LX-B	10 pole male D-size receptacle, black chrome metal housing, duplex ground contact

